



**ELECTRONIC COPY**

LG772629010  
Report verification at igi.org



March 2, 2026

IGI Report Number **LG772629010**

Description **LABORATORY GROWN DIAMOND**

Shape and Cutting Style **EMERALD CUT**

Measurements **11.18 X 7.48 X 4.88 MM**

**GRADING RESULTS**

Carat Weight **4.07 CARATS**

Color Grade **D**

Clarity Grade **VVS 2**

March 2, 2026  
IGI Report Number **LG772629010**  
Description **LABORATORY GROWN DIAMOND**  
Shape and Cutting Style **EMERALD CUT**  
Measurements **11.18 X 7.48 X 4.88 MM**

**GRADING RESULTS**

Carat Weight **4.07 CARATS**

Color Grade **D**

Clarity Grade **VVS 2**

**ADDITIONAL GRADING INFORMATION**

Polish **EXCELLENT**

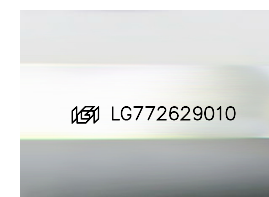
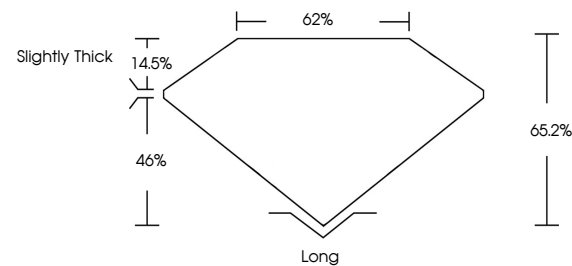
Symmetry **EXCELLENT**

Fluorescence **NONE**

Inscription(s) **IGI LG772629010**

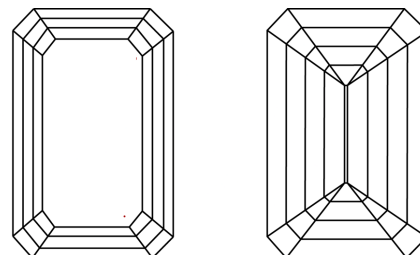
Comments: This Laboratory Grown Diamond was created by Chemical Vapor Deposition (CVD) growth process. Type IIa

**PROPORTIONS**



Sample Image Used

**CLARITY CHARACTERISTICS**



**KEY TO SYMBOLS**

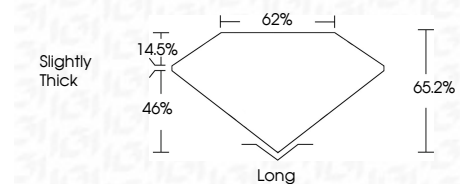
Red symbols indicate internal characteristics.  
Green symbols indicate external characteristics.

**COLOR**

D E F G H I J Faint Very Light Light

**CLARITY**

FL	IF	VVS <sup>1-2</sup>	VS <sup>1-2</sup>	SI <sup>1-2</sup>	I <sup>1-3</sup>
Flawless	Internally Flawless	Very Very Slightly Included	Very Slightly Included	Slightly Included	Included



**ADDITIONAL GRADING INFORMATION**

Polish **EXCELLENT**

Symmetry **EXCELLENT**

Fluorescence **NONE**

Inscription(s) **IGI LG772629010**

Comments: This Laboratory Grown Diamond was created by Chemical Vapor Deposition (CVD) growth process. Type IIa



**IGI**



March 2, 2026  
IGI Report No **LG772629010**  
**EMERALD CUT**  
11.18 X 7.48 X 4.88 MM  
4.07 CARATS  
D  
VVS 2  
65.2%  
62%  
Slightly Thick  
Long  
EXCELLENT  
EXCELLENT  
NONE  
IGI LG772629010  
Comments: This Laboratory Grown Diamond was created by Chemical Vapor Deposition (CVD) growth process. Type IIa